



BBI LOGISTICS

— **JEFF BAUMGARDNER** —

JBAUMGARDNER@BBILOGISTICS.COM

(614) 927-1200 EXT. 441

(614) 928-4712 (CELL)



OVERVIEW



BUILT ON BETTER INTEGRITY

MISSION

TO ENABLE OUR CUSTOMERS THE ABILITY TO GROW AND SHIP PRODUCT EFFECTIVELY THROUGH EXCEPTIONAL TRANSPORTATION SOLUTIONS AND SCALABILITY.

PROMISE

WE MAKE A PERSONAL COMMITMENT TO ENSURE OUR CUSTOMER'S SUCCESS AND STAND BEHIND THE RELIABILITY WE PROMISE. WE WORK RELENTLESSLY TO PROVIDE THE FASTEST SOLUTIONS 24/7/365.



**FOUNDED IN 2017
IN COLUMBUS, OHIO**



**25,000 +
CARRIER NETWORK**

**FORTUNE 500
CLIENTS**

**10+ YEARS
SUPPLY CHAIN LOGISTICS
DISTRIBUTION EXPERIENCE**

**(614) 927-1200 EXT. 441
(800) 809-2172
WWW.BBILOGISTICS.COM**

**VOTED,
"BEST PLACE
TO WORK IN
COLUMBUS,
OHIO"**

COLUMBUS BUSINESS FIRST



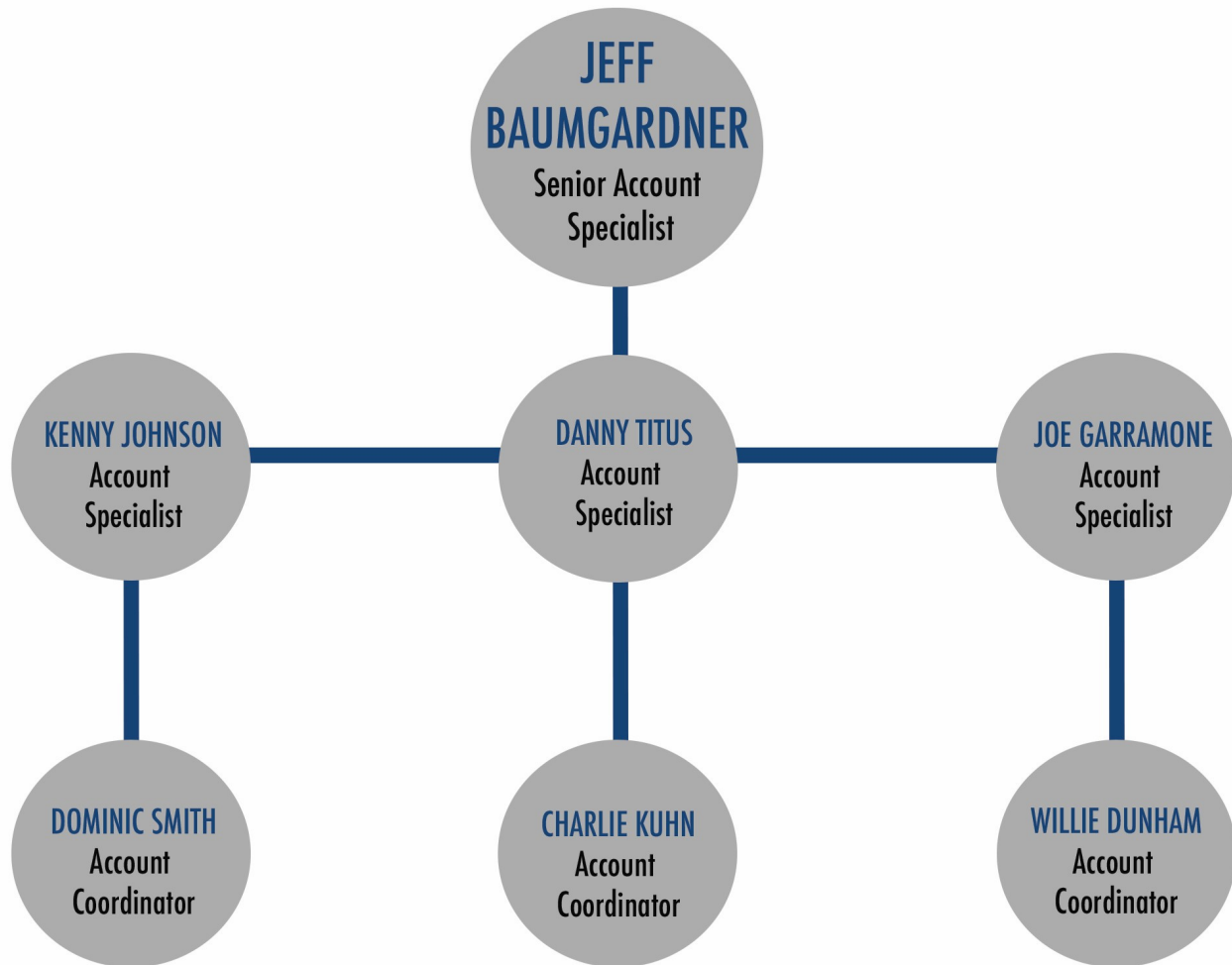
2019 BEST PLACES TO WORK



ACCOUNT STRUCTURE



BBI TEAM



SENIOR ACCOUNT SPECIALIST: Primary 24/7/365 point of contact. Manages overall account and customer relationship, maintains quality service on all levels.

ACCOUNT SPECIALIST: Manages daily accounts tasks with a priority on assigning, dispatching, and communicating with trucks.

ACCOUNT COORDINATOR: Maintains carrier relationships and ensures capacity.

REFERENCES

FieldCore
a GE company

Walmart



DEHUISOLAR
S H A R E V A L U E



BEYOND MEAT

arcadia

MOLSON Coors



KeHE



KINECT
SOLAR

Sysco

AmpSun



GARDEN FRESH
GOURMET

SOLAR WHOLESALE LLC

2019

YEAR RECAP

- + 200% EMPLOYEE GROWTH
- + 300% CUSTOMER BASE GROWTH
- + 500% CARRIER PARTNER GROWTH
- + NEW BUILD DOWNTOWN OFFICE

80 EAST RICH ST. COLUMBUS, OH 43215



2020

AS YOU GROW WE GROW

- + ACCELERATED CUSTOMER & CAPACITY GROWTH
- + CONTINUED EMPLOYEE GROWTH OF 100%+
- + CUSTOM TMS DATABASE
- + ADVANCED COMMUNICATION CAPABILITIES
- + CONSTANT MARKET VISIBILITY
- + QUARTERLY SUPPLY CHAIN ANALYSIS
- + CONSULTATION SERVICES

